

WARRANTY NOTICE:

There are **NO WARRANTIES**, either expressed or implied. Neither the seller nor manufacturer will be liable for any loss, damage or injury, direct or indirect, arising from the use or inability to determine the appropriate use of any product. Before any attempt at installation, all drawings and/or instruction sheets should be completely reviewed to determine the suitability of the product for its intended use. In this connection, the user assumes all responsibility and risk. We reserve the right to change specification without notice. Further, Chris Alston's Chassisworks, Inc., makes **NO GUARANTEE** in reference to any specific class legality of any component. **ALL PRODUCTS ARE INTENDED FOR RACING AND OFF-ROAD USE AND MAY NOT BE LEGALLY USED ON THE HIGHWAY.** The products offered for sale are true race-car components and, in all cases, require some fabrication skill. **NO PRODUCT OR SERVICE IS DESIGNED OR INTENDED TO PREVENT INJURY OR DEATH.**

INSTALLATION GUIDE



Intermediate Shaft Set For use with TCP Rack & Pinion and aftermarket steering column

P/N: TCP ISFT-04



Total Control Products
A Chris Alston's Chassisworks, Inc. Brand
8661 Younger Creek Drive
Sacramento, CA 95828
Phone: 916-388-0288
Technical Support: tcptech@cachassisworks.com

DESCRIPTION:

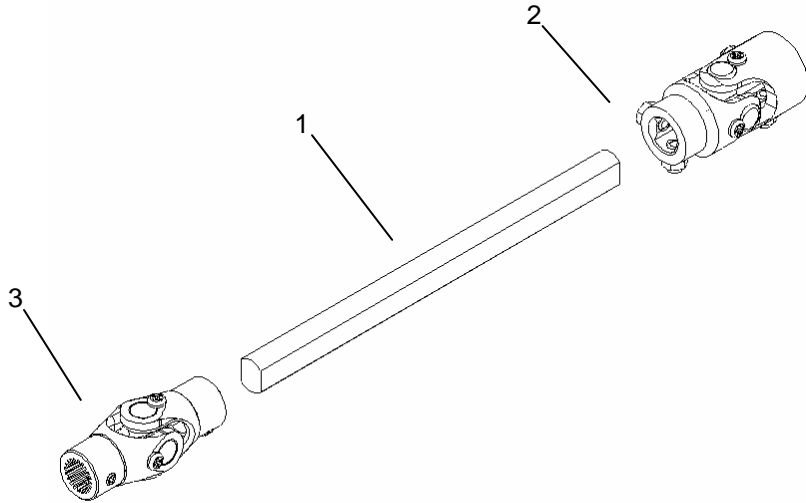
3/4-36 AFTERMARKET U-JOINTS & INTERMEDIATE SHAFT 10"
LONG

APPLICATIONS:

FITS '60-65 FALCON/COMET, '64-70 MUSTANG/COUGAR WITH
IDIDIT AFTERMARKET STEERING COLUMN

PARTS LIST

Item	Part Number	Description	Qty
1	7900-094	Shaft 3/4-DD x 10" Long	1
2	3128-CNS-3449	Universal Joint, 3/4-36 x 3/4-DD, 35°	1
3	3128-CNS-4930	Universal Joint, 3/4-DD x 3/4-20, 35°	1

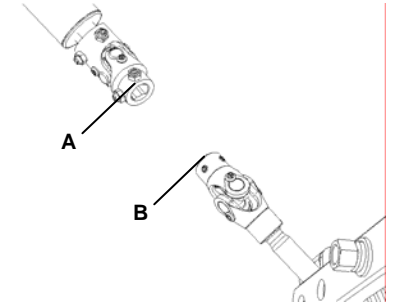


INSTRUCTIONS

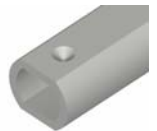
To proceed, the instructions for the steering column must be completed and the rack-&-pinion loosely bolted in place.

1. Place universal joint #3128-CNS-3449 onto the exposed 3/4-36 steering shaft extending from the column.
 - a. 7/8" of shaft engagement is required.
 - b. Temporarily tighten setscrews just enough to hold the u-joint in place.
2. Place universal joint #3128-CNS-4930 onto the 3/4-20 spline pinion shaft at the rack.
 - a. 1" of shaft engagement is required.
 - b. Temporarily tighten setscrews just enough to hold the u-joint in place.

3. Angle the u-joints toward each other.
 - a. Measure the distance from end to end of u-joints. (Points "A" and "B" shown in the illustration.)
 - b. Add 1-7/8" to the measured length. This is your "cut to" length.
 - c. We recommend adding 1/4" to the calculated length if you are unsure of the correct fit. The shaft can then be shortened after test fitting.
4. Place supplied shaft #7900-094 into a vise and cut square to the calculated length.
 - a. File to remove any sharp edges.
5. Paint the cut end of the shaft to protect against rust.
6. The driver side end of the rack-&-pinion must be lowered to insert the correct length intermediate shaft between the u-joints.
 - a. Insert the shaft into the upper u-joint.
 - b. Insert the shaft into the lower u-joint as the rack-&-pinion is lifted back into position.
7. Snugly bolt the rack into place and verify that the shaft length and position are correct. Refer to illustration to right.
8. Once the length and position have been verified the upper u-joint setscrews can be tightened to mark the shaft.



Shaft must not extend into open area of u-joint. Lengths exceeding 7/8" of engagement will cause u-joints to bind.



- a. Remove shaft and drill an indent on flat side of shaft at marked position. (See illustration.)
9. Final assembly can now be completed.
 - a. Place shaft into u-joints as described in step 6.
 - b. Apply a drop of medium strength Loctite™ to setscrews.
 - c. Tighten setscrews to 15-17 lb. ft. using 1/8" and 5/32" allen wrenches.
 - d. Tighten setscrew jam nuts to 15-17 lb. ft.
10. Turn steering wheel to check for binding.