

READ ALL INSTRUCTIONS COMPLETELY AND THOROUGHLY UNDERSTAND THEM BEFORE DOING ANYTHING.  
CALL TOTAL CONTROL PRODUCTS TECH SUPPORT (916) 388-0288 IF YOU NEED ASSISTANCE.

# INSTALLATION GUIDE



## TCP MM-C3S Steel Motor Mounts for TCP Front Clip Modular Ford (4.6L, Coyote)



**Description:** Poly-bushed steel motor mounts for TCP front frame clip or CAC frame clip or crossmember. Includes Grade 8 mounting hardware.

# PARTS LIST

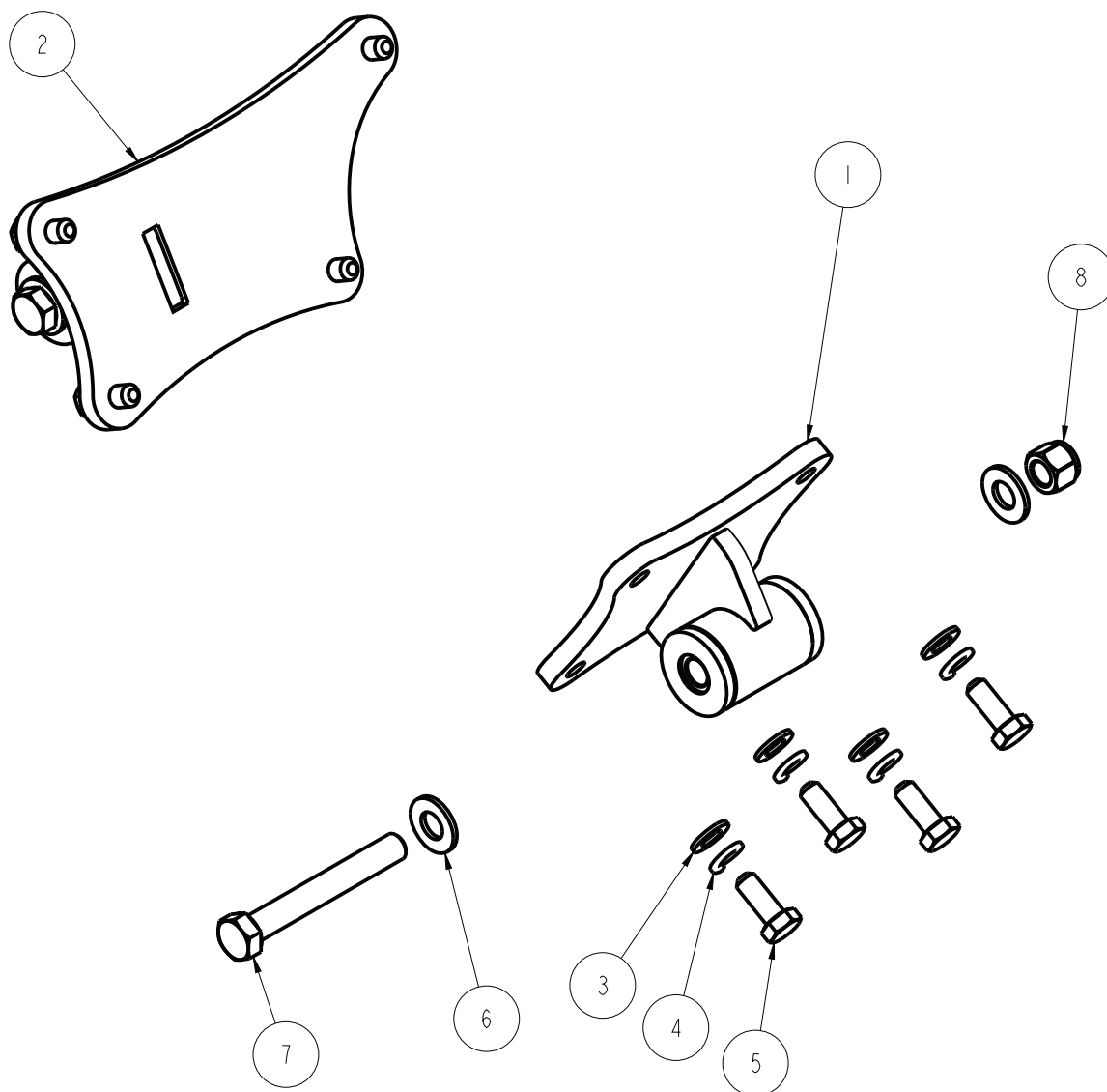
## TCP MM-C3S - Modular Ford Steel Motor Mounts for TCP Front Clip

Qty	Part Number	Description
2	3100-050C3.75Y	Bolt, 1/2-13 x 3-3/4" hex head cap screw, yellow zinc
2	3101-050-13C	Locknut, 1/2-13 nylon insert, clear zinc
8	3108-M10R-C	Lock washer, 10mm regular, clear zinc
4	3120-050S-Y	Washer, 1/2" flat SAE hardened, yellow zinc
8	3139-10C-025-Y	Bolt, 10mm - 1.50p x 25mm, yellow zinc
8	3157-M10S-C	Washer, M10 flat SAE, clear zinc
1	7901-079	Motor mount assembly, driver side
1	7901-080	Motor mount assembly, passenger side

# TORQUE SPECS

Torque	Bolt Size	Location
40 ft-lbs	10mm	Mount to engine block
75 ft-lbs	1/2"-13	Motor-mount through bolt

ITEM	QTY	PART NO.	DESCRIPTION
1	1	7901-079	MOTOR MOUNT ASSY, DRIVER, FABRICATED, FORD MODULAR MOTOR
2	1	7901-080	MOTOR MOUNT ASSY, PSGR, FABRICATED, FORD MODULAR MOTOR
3	8	3157-M10S-C	WASHER, M10 SAE, YELLOW ZINC, HV200, 10.5MM ID x 20MM OD x 2MM THICK
4	8	3108-M10R-C	LOCK WASHER, HELICAL SPRING M10, STEEL, ZINC
5	8	3139-10C-025-Y	HEX BOLT, M10-1.5 x 25MM, GRADE 10.9, YELLOW ZINC
6	4	3120-050S-Y	FLAT WASHER, 1/2 SAE, HARDENED, YELLOW ZINC
7	2	3100-050C3.75Y	HEX BOLT, 1/2-13 x 3 3/4, GRADE 8, YELLOW ZINC
8	2	3101-050-13C	LOCKNUT 1/2-13, GRADE 5, NYLON INSERT, CLEAR ZINC



DESCRIPTION		<b>MOTOR MOUNT KIT, STEEL, FORD MODULAR BLOCK</b>	
<i>Chris Alston's</i> <b>CHASSISWORKS INC.</b> 8661 YOUNGER CREEK DRIVE SACRAMENTO, CA 95828 (916) 388-0288 FAX 388-0295		PART NO.	<b>TCP MM-C3S</b>
		8/4/15	DWG: 7903-MM-C3S

**WARRANTY NOTICE:**

There are NO WARRANTIES, either expressed or implied. Neither the seller nor manufacturer will be liable for any loss, damage or injury, direct or indirect, arising from the use or inability to determine the appropriate use of any products. Before any attempt at installation, all drawings and/or instruction sheets should be completely reviewed to determine the suitability of the product for its intended use. In this connection, the user assumes all responsibility and risk. We reserve the right to change specification without notice. Further, Chris Alston's Chassisworks, Inc., makes **NO GUARANTEE** in reference to any specific class legality of any component. **ALL PRODUCTS ARE INTENDED FOR RACING AND OFF-ROAD USE AND MAY NOT BE LEGALLY USED ON THE HIGHWAY.** The products offered for sale are true race-car components and, in all cases, require some fabrication skill. **NO PRODUCT OR SERVICE IS DESIGNED OR INTENDED TO PREVENT INJURY OR DEATH.**

Total Control Products  
A Chris Alston's Chassisworks, Inc. Brand  
8661 Younger Creek Drive  
Sacramento, CA 95828  
Phone: 916-388-0288  
Technical Support: [tcptech@cachassisworks.com](mailto:tcptech@cachassisworks.com)

