

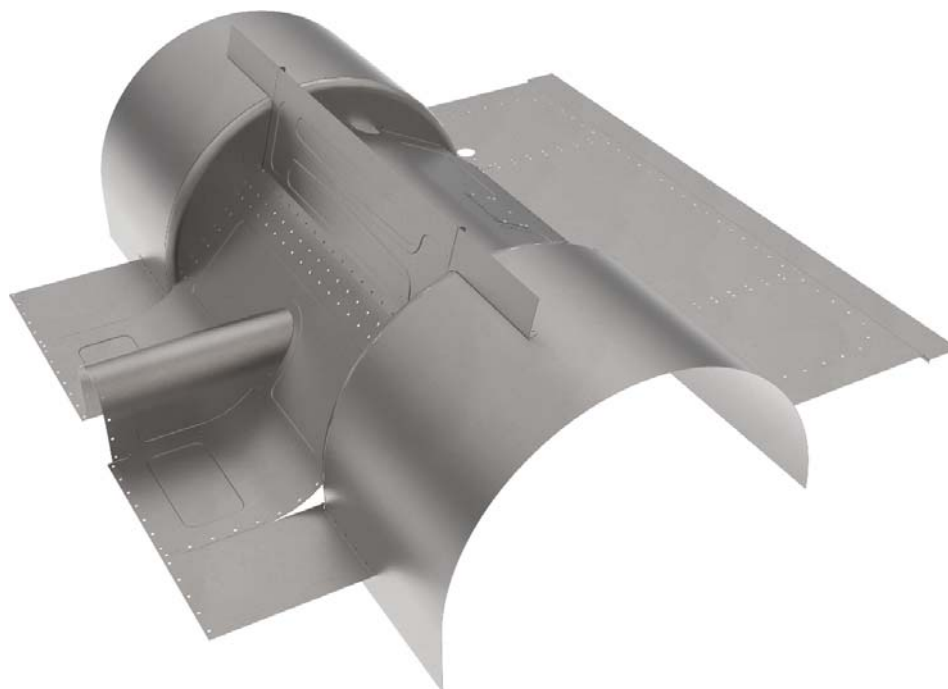
READ ALL INSTRUCTIONS COMPLETELY AND THOROUGHLY UNDERSTAND THEM BEFORE DOING ANYTHING.  
CALL CHASSISWORKS TECH SUPPORT (916) 388-0288 IF YOU NEED ASSISTANCE.

# INSTALLATION GUIDE



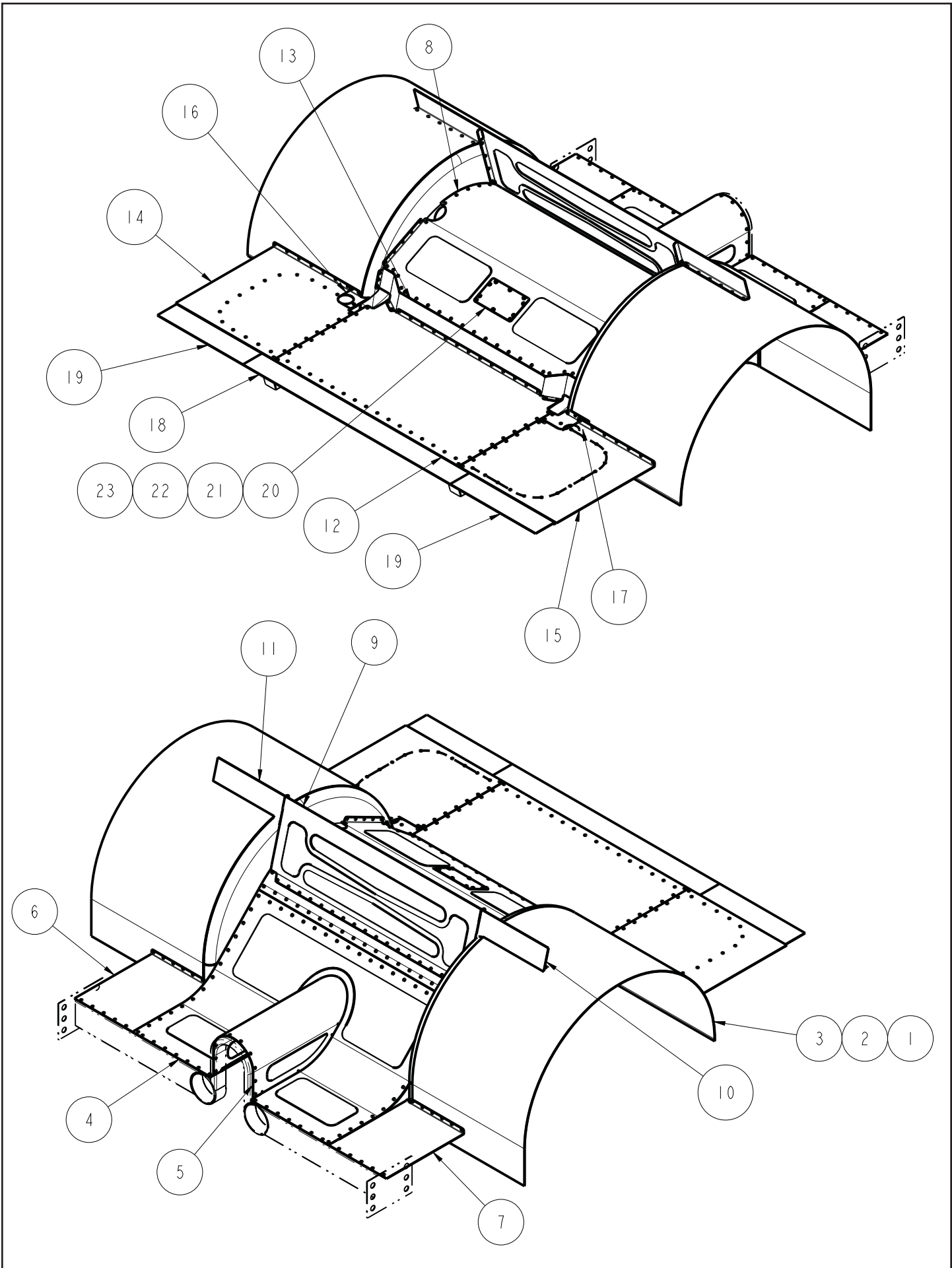
## 7740-M10R

### Rear Floor Kit for '64-70 Mustang Canted 4-Link and Torque Arm



NOTE: Builder Wheel Tubs must be purchased separately.

**Description:** Rear floor kit for Canted 4-Link and Torque Arm frame clips. Contains complete rear floor to tail light panel with builder tub extensions and rear firewall between tubs. Builder Wheel Tubs must be purchased separately.



ITEM	QTY	PART NO.	DESCRIPTION
1	2	7972-2187	Ø34 WHEEL TUB CAP
2	2	7972-2193	INSERT, WHEEL TUB CORNER
3	2	7972-2191	SKIN, WHEEL TUB, Ø34 x 60 LONG, 3.30 STRAIGHT, 20 WIDE
4	1	7972-2422	REAR FLOOR, AXLE FRONT, CANTED 4-BAR, M10
5	1	7972-2423	REAR TUNNEL TERMINATION, CANTED 4-BAR, M10
6	1	7972-2529	REAR FLOOR FILLER, FRONT AXLE, OUTBOARD PSGR, IRS, M10
7	1	7972-2530	REAR FLOOR FILLER, FRONT AXLE, OUTBOARD DRV, IRS, M10
8	1	7972-2648	REAR FLOOR, OVER AXLE, CANTED 4-BAR, FLUSH FILLER, M10
9	1	7972-2647	BULKHEAD, REAR FIREWALL, CANTED 4-BAR, M10
10	1	7972-2655	FILLER PLATE, REAR FIREWALL, DRIVER, CANTED 4-BAR, M10
11	1	7972-2656	FILLER PLATE, REAR FIREWALL, PSGR, CANTED 4-BAR, M10
12	1	7972-2649	TRUNK FLOOR, CENTER, CANTED 4-BAR, FLUSH FILLER, M10
13	1	7972-2650	REAR PANEL, TRUNK, CANTED 4 BAR, FLUSH FILLER, M10
14	1	7972-2355	REAR TRUNK FLOOR, DRIVER, IRS, M10
15	1	7972-2356	REAR TRUNK FLOOR, PSGR, IRS, M10
16	1	7972-2498	FILLER, TRUNK, IRS, M10, DRIVER
17	1	7972-2432	FILLER, TRUNK, PASSENGER, CANTED 4-BAR, M10
18	1	7972-2038	REAR FLOOR FILLER, TRUNK, CENTER, CANTED 4-BAR, F10
19	2	7972-2039	REAR FLOOR FILLER, TRUNK, OUTBOARD, CANTED 4-BAR, F10
20	1	7972-2550	COVER, RESERVOIR POCKET, CANTED 4-BAR, 27 DEGREE
21	10	3104-019F0.50S	BUTTON HEAD SOCKET CAP SCREW 10-32 x 1/2, STAINLESS STEEL
22	10	3157-019S-S	WASHER, #10 SAE, STAINLESS, 7/32 ID x .7/16 OD x 3/64 THICK
23	10	3101-019-32S	LOCKNUT 10-32, GRADE 5, STAINLESS STEEL

DESCRIPTION		<b>FLOOR KIT, REAR, 4-BAR, gSTREET, 64-70 MUSTANG</b>	
<i>Chris Alston's</i> <b>CHASSISWORKS INC.</b> 8661 YOUNGER CREEK DRIVE SACRAMENTO, CA 95828 (916) 388-0288 FAX 388-0295		PART NO.	<b>7740-M10-R</b>
		10/22/18	DWG: 7951-7740M10R

# PARTS LIST

## 7950-7740M10R - Rear Floor Kit

Qty	Part Number	Description
10	3101-019-32S	Locknut, 10/32 stainless, nylon insert
10	3104-019F0.50C	Cap screw, 10/32 x 1/2" button head allen, clear zinc
10	3157-019S--S	Washer, #10 stainless steel
1	7972-2038	Center trunk filler panel
2	7972-2039	Outboard trunk filler panel
2	7972-2193	Wheel tub corner extension
1	7972-2422	Rear floor, axle front
1	7972-2423	Rear tunnel termination
1	7972-2425	Floor filler, axle front, passenger side
1	7972-2426	Floor filler, axle front, driver side
1	7972-2428	Rear trunk floor, driver side
1	7972-2429	Rear trunk floor, passenger side
1	7972-2431	Filler trunk tub, driver side
1	7972-2432	Filler trunk tub, passenger side
1	7972-2550	Reservoir pocket cover
1	7972-2647	Rear firewall bulkhead
1	7972-2648	Floor over axle
1	7972-2649	Trunk center floor
1	7972-2650	Trunk flush filler
1	7972-2655	Rear firewall filler, driver side
1	7972-2656	Rear firewall filler, passengerside

# INSTRUCTIONS

## Cleco Assembly Tabs

Cleco fasteners and pliers make fitting sheet metal pieces together for welding much easier and are highly recommended. Clecos are small, spring-loaded clamps that insert into 1/8" holes to draw multiple panels together. A twenty-five fastener and plier set is available from Chassisworks; Item 6702.

Assembly tabs are included with the transmission tunnel to aid in fitting the tunnel to the floor and firewall. Tabs should be bent, clecoed or tacked as needed.



## FITMENT

- Floor and firewall pieces are pre-formed for accurate fit, aligning from the driveshaft tunnel outward.
- Begin by aligning the driveshaft tunnel and adjoining floor sections with the forward edge of the B-pillar crossmember and driveshaft loop. The floor sections must be trimmed flush with outside edge of the frame.
- Outer floor sections just forward of the axle are fit and trimmed to meet the rocker after the wheel tubs have been installed.
- Rear firewall panel must be trimmed flush with the outside edge of the frame. Top edge is bent and trimmed as required to meet the rear deck.
- Outside firewall filler plates are trimmed and fit after the wheel tubs have been installed.
- The four tapered frame deck filler panels are fit against the wheel tub and must be trimmed at the centerline of the rear frame deck.
- Center trunk transition and floor panel can be fit at trimmed along the tail light panel at this time.
- Outside trunk floor panels are fit and trimmed after wheel tubs have been installed.

## WELDING

- Use of a heatsink will drastically reduce warpage when welding. A large chunk of aluminum clamped by the welding area makes a simple but effective heatsink. Tack welding every 1/2 to 3/4 of an inch before final welding will also help.

**WARRANTY NOTICE:**

There are NO WARRANTIES, either expressed or implied. Neither the seller nor manufacturer will be liable for any loss, damage or injury, direct or indirect, arising from the use or inability to determine the appropriate use of any products. Before any attempt at installation, all drawings and/or instruction sheets should be completely reviewed to determine the suitability of the product for its intended use. In this connection, the user assumes all responsibility and risk. We reserve the right to change specification without notice. Further, Chris Alston's Chassisworks, Inc., makes **NO GUARANTEE** in reference to any specific class legality of any component. **ALL PRODUCTS ARE INTENDED FOR RACING AND OFF-ROAD USE AND MAY NOT BE LEGALLY USED ON THE HIGHWAY.** The products offered for sale are true race-car components and, in all cases, require some fabrication skill. **NO PRODUCT OR SERVICE IS DESIGNED OR INTENDED TO PREVENT INJURY OR DEATH.**

Chris Alston's Chassisworks  
8661 Younger Creek Drive  
Sacramento, CA 95828  
Phone: 916-388-0288  
Technical Support: [sales@cachassisworks.com](mailto:sales@cachassisworks.com)

