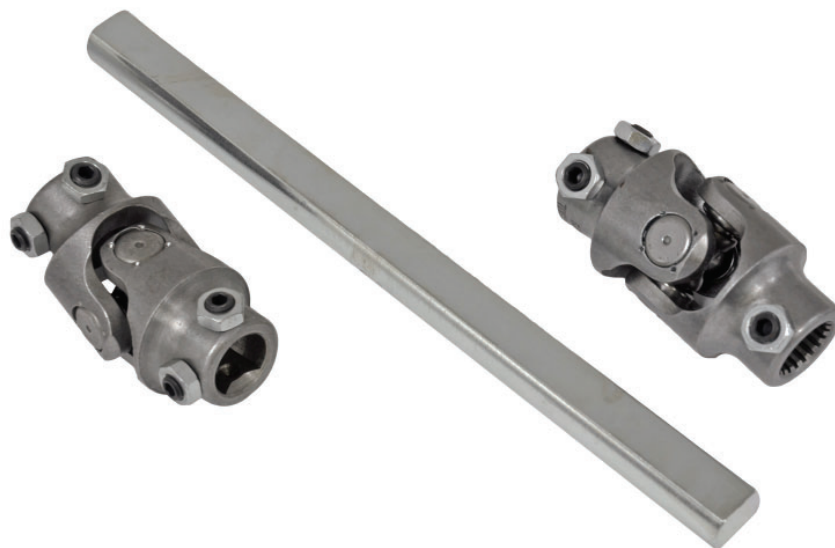


READ ALL INSTRUCTIONS COMPLETELY AND THOROUGHLY UNDERSTAND THEM BEFORE DOING ANYTHING.  
CALL TOTAL CONTROL PRODUCTS TECH SUPPORT (916) 388-0288 IF YOU NEED ASSISTANCE.

# INSTALLATION GUIDE



## TCP ISFT-03 Intermediate Shaft Set For use with TCP Rack-&-Pinion and Aftermarket steering column (high misalignment)



**Description:** Intermediate shaft set 1"-DD x 3/4-20 x 10" high misalignment

**Applications:** Fits '60-65 Falcon/Comet and '64-70 Mustang/Cougar with Flaming River aftermarket steering column

# PARTS LIST

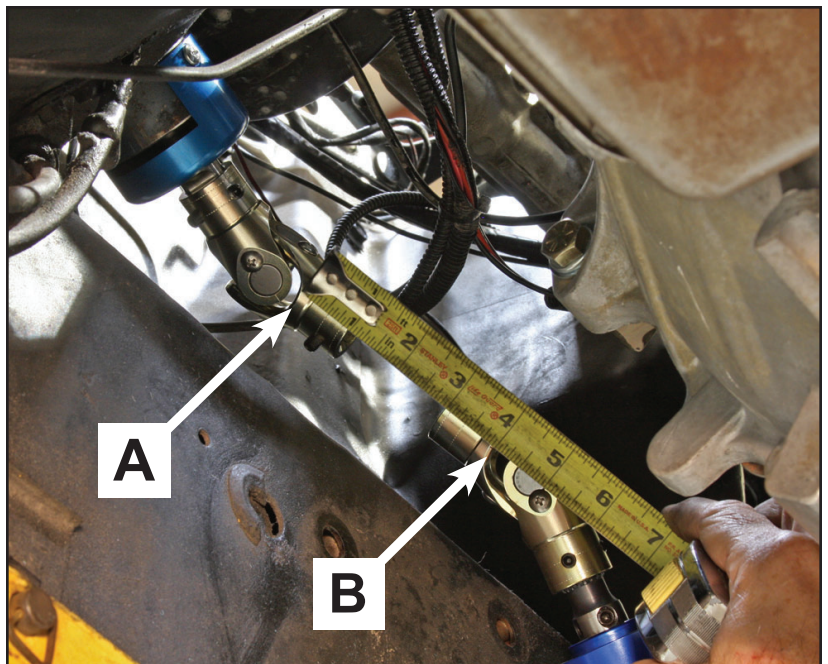
## TCP ISFT-03 - Intermediate Shaft Kit 10" Long Shaft

Qty	Part Number	Description
1	7900-094	Shaft 3/4-DD x 10 long clear zinc plated
1	3128-CNS-4930	U-joint 3/4-DD x 3/4-20, 35 degree
1	3128-CNS-5249	U-joint 1"-DD x 3/4-DD, 35 degree

## INSTRUCTIONS

*NOTE: A 1965 Mustang was used for the following images and may show slight differences from the later Falcon and Comet platforms. The installation procedure is identical.*

1. To proceed, the instructions for the steering column must be completed and the rack and pinion bolted in place.
2. Place the 3/4"-20 universal joint onto the splined pinion shaft at the rack. One inch of shaft engagement is required.
3. Temporarily tighten the setscrews just enough to hold the u-joint in place.
4. Place the 3/4"-DD universal joint onto the exposed steering shaft extending from the column.
5. One inch of shaft engagement is required.
6. Temporarily tighten the setscrews just enough to hold the u-joint in place.
7. Angle the u-joints toward each other.
8. Measure the distance from point "A" to point "B" as shown in the illustration. This is your "cut to" length.
9. We recommend adding 1/4" to the measured length if you are unsure of the correct fit. The shaft can then be shortened after test fitting.
10. Place supplied shaft #7900-094 into a vise and cut square to the determined length.
11. File to remove any sharp edges.
12. Paint the cut end of the shaft to protect against rust.



13. Loosen the set screws on the two u-joints and slide them as far apart as they will go.
14. Insert the shaft into the upper u-joint.
15. Insert the shaft into the lower u-joint.



16. Slide the u-joints into position on the rack and the column before tightening the set screws.



17. Move the steering wheel through its complete travel. There should not be any binding. If bind is detected in the steering wheel you may need to shorten the 3/4-DD shaft until the steering moves freely.



**WARRANTY NOTICE:**

There are NO WARRANTIES, either expressed or implied. Neither the seller nor manufacturer will be liable for any loss, damage or injury, direct or indirect, arising from the use or inability to determine the appropriate use of any products. Before any attempt at installation, all drawings and/or instruction sheets should be completely reviewed to determine the suitability of the product for its intended use. In this connection, the user assumes all responsibility and risk. We reserve the right to change specification without notice. Further, Chris Alston's Chassisworks, Inc., makes **NO GUARANTEE** in reference to any specific class legality of any component. **ALL PRODUCTS ARE INTENDED FOR RACING AND OFF-ROAD USE AND MAY NOT BE LEGALLY USED ON THE HIGHWAY.** The products offered for sale are true race-car components and, in all cases, require some fabrication skill. **NO PRODUCT OR SERVICE IS DESIGNED OR INTENDED TO PREVENT INJURY OR DEATH.**

Total Control Products  
A Chris Alston's Chassisworks, Inc. Brand  
8661 Younger Creek Drive  
Sacramento, CA 95828  
Phone: 916-388-0288  
Technical Support: [tcptech@cachassisworks.com](mailto:tcptech@cachassisworks.com)

